

INSTALLATION GUIDE

EDELHOLZ OUTDOOR TERRACE DECKING

INSTALLATION GUIDE

GENERAL REQUIREMENTS BEFORE THE INSTALLATION OF ASH TERRACE DECKING

If possible, store the terrace decking planks in a covered place before installation. If you are forced to store it in an uncovered place, make sure that it does not come into direct contact with the ground during storage, and cover the stored pallets with a dark, waterproof tarpaulin. The dark tarpaulin protects the terrace decking units from the sun's radiation (UV), which can strongly fade the units as they cover each other, moreover, the tarpaulin also protects them from rain.

The foundation must be prepared before installation. The thermo ash decking should be installed on a flat, smooth, concrete foundation. The adequate drainage of the prepared foundation is important (min. 0.5% slope – min. 1 cm for 2 metres) so that no stagnant water can form under the installed terrace decking. Also, make sure that the terrace decking also has a slight slope (min. 0.5% slope), otherwise the precipitation may stop on the surface of the terrace decking later, where the moisture can penetrate into the slight surface cracks of the wood and cause further cracks. This is especially true during the period of melting in winter, when water entering the cracks can freeze and severely damage the wood. It is possible to create a slope of the terrace decking units with a so-called plastic levelling feet, however, this can only create the slope of the terrace decking, not of the concrete foundation, and stagnant water can still remain under the terrace. When laying on a gravel surface, we recommend the use of geotextile (200 g) in an appropriate layering to prevent unwanted plants growing under the terrace decking.

GENERAL REQUIREMENTS FOR SUBSTRUCTURE AND FOR TERRACE DECKING INSTALLATION

The material of the substructure can only be thermo pine, or in case of substructure belonging to the system - aluminum.

Lubricate with a brush all 4 sides and 2 ends of the beams of the substructure with moisture-barrier wax before the installation.

The thickness of the beams making up the substructure must be at least 40 mm.

Do not lay the substructure directly on the concrete, use plastic leveling feet (see on image No. 1.) or a rubber strip to separate the concrete and the substructure, thus ensuring that the substructure does not stand in water in case of precipitation. The minimum distance between the ground and the substructure is 5 mm.

It is forbidden to drill, dowel or glue the substructure into the concrete.

When using leveling feet, use a spirit level to set the correct slope of the substructure beams (min. 0.5 %). You can adjust the leveling with the help of the leveling feet using a screwdriver. The terrace decking and the beams of the substructure must be perpendicular to each other. The appropriate distance (approx. 8 mm) between the terrace decking and the substructure is achieved with the help of the clips included in the system (see on image No. 2.).

The distance between the beams of the substructure (centre axis of the beam) shall not exceed 400 mm (see first image in the appendix). Do not let wood get in direct contact with wood.



Make sure that at the end of the terrace, the edges of the terrace decking planks extend beyond the last beam of the substructure by max. 50-100 mm (see on image No. 3.)!

Between the planks of the terrace decking keep the prescribed distance of approx. 7 mm (see description of SFIX FT clips and image No. 4.)!

Pay close attention to the fact that the terrace decking planks must never be in direct contact with each other and cannot be jointed directly. It is always necessary to keep the prescribed distance between them!

Use stainless steel screws during installation!

In order to avoid the cracking of the terrace decking, it is obligatory to lubricate the ends of the terrace decking planks with moisture-barrier wax!

When terrace decking planks are next to a wall, a distance of 20 mm must be maintained between the planks and the walls to ensure proper ventilation of the decking system (see on image No. 5.).

The free sides of the terraces should never be completely closed, leave a ventilation gap at a height of at least 50 mm in order to ventilate the terrace system (see image No. 6.)! But if you still want to close this ventilation gap, we recommend the use of the so-called "wasp-net", also known as gutter net.

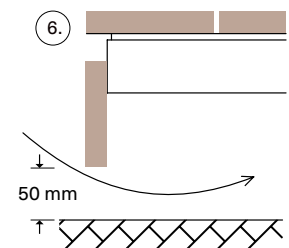
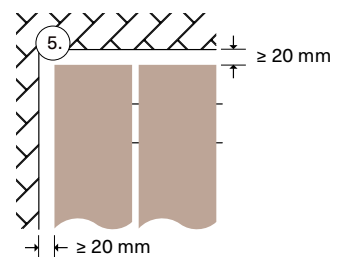
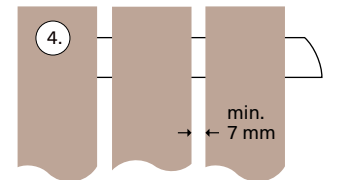
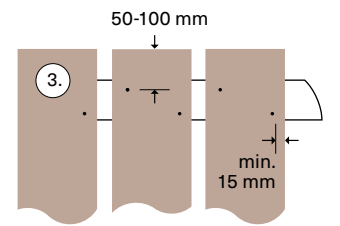
Make sure that the ends of the terrace decking do not end directly close to a paved or concreted surface, as raindrops "bouncing" off the concrete mean an extra moisture load for the ends of the terrace decking planks, helping to allow the cracks to form and increase. Instead of paving and concreting, it is recommended to create a fine gravel or green lawn around the terrace.

Install your terrace decking with the help of SFIX FT Clips (see image No.7.), offering the following advantages:

- Terrace decking planks can be fixed without drilling and screwing, so that no new moisture attack points are created on the surface of the wood.
- Stabilizes the terrace decking planks against transverse and longitudinal displacement.
- Only 1 screwing is required per clip.
- Used screws in stainless, hardened design.
- Clips automatically set the required distance between the longitudinal sides of the planks, no need to use separate spacers when laying.
- Clip soles automatically provide the required ventilation gap between the terrace decking planks and the substructure (8 mm).
- It is not necessary to use a fastener tool or pulling iron to tighten the rows, the clips tighten and stabilize the planks.
- SFIX FT is heat-, frost- and UV- resistant.

Steps of installation:

- As a first step, lay the first row, this will be the so-called lead line. Make sure that the terrace decking planks in the first row are in one line. It is recommended to use a guide wire or laser ruler.
- To fix the starting row, use an SFIX FT clip on the wall side by cutting off the wall-side base of the clip with a saw.
- After fixing the starting line, go from line to line laying the planks. Be sure to insert the screw only halfway into the SFIX FT clips, just enough to push the screw into the substructure (see the second image of the appendix). After laying 6-8 rows in this way, fully screw in the screws on the last laid planks into the SFIX FT clip, and then fully insert all the screws. By tightening the screws, the clips open like the head of a rose, tightening and fixing the terrace decking planks.



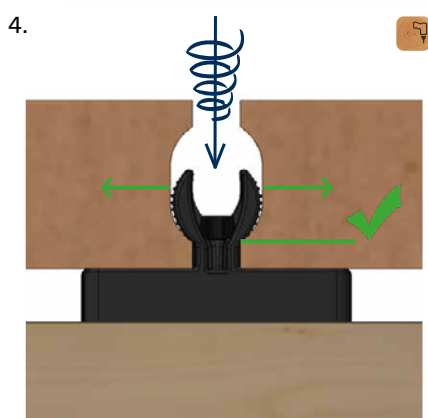
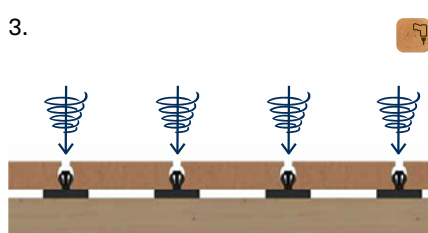
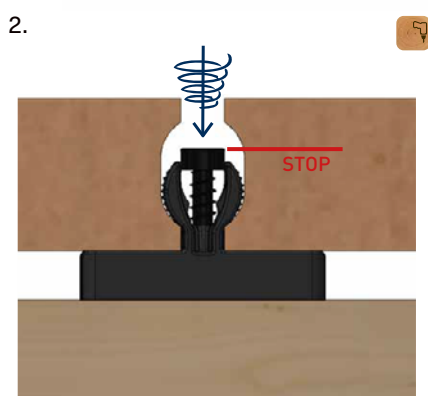
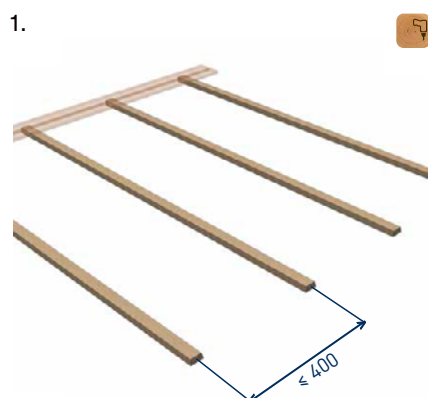
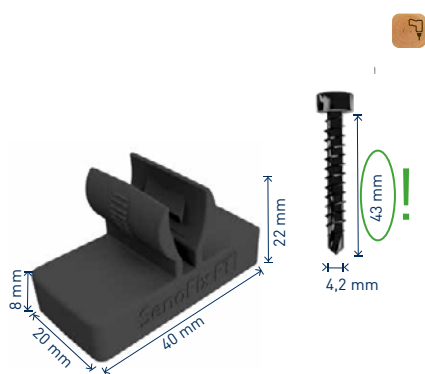
- **During the installation, pay attention to the followings:**

- When extending the terrace decking planks lengthwise, leave approx. 5 mm gap.
- Treat the cut ends of the planks with „moisture-barrier“ wax.
- Longitudinal joints of terrace decking planks must never take place over a substructure beam.
- The appropriate distance (approx. 8 mm) between the terrace decking and the substructure is achieved with the help of the clips included in the system.
- At the edges of the terrace, make sure that the extension of the terrace decking planks over the last beam of the substructure is max. 5-10 cm.
- The free sides of the terraces should never be completely closed, leave a ventilation gap at a height of at least 5 cm to ventilate the terrace system (the use of gutter net is recommended).

Hint

SFIX Clips can be used for the installation of wall covering panels as well (see in the appendix).

APPENDIX



Application of SFIX Clips for the installation of wall covering

